

ITEM NO.	PART NUMBER	DESCRIPTION	QTY
1	CTSK4-G00	SUNVISOR LEFT PANEL	1
2	CTSK4-D00	SUNVISOR RIGHT PANEL	1
3	CKTSK4-U00	RIGHT & LEFT SUNVISOR BRACKET	2
4	CKTSK4-C02	CENTER SUNVISOR BRACKET	1
5	B-W14SS	STAINLESS STEEL 1/4" FLAT WASHER	12
6	B-W10OD12SS	FLAT WASHER 10 OD 1/2" SS	4
7	B-TP14X34SS	TRUSS PHILIPS 1/4" 20NCX3/4"SS	12
8	B-TP10X32SS	TRUSS PHILIPS 10-32 NF X 1 1/4"SS	4
9	B-NL10X32SS	NYLON LOCK NUT #10-32NF	4
10	B-LW14SS	LOCK WASHER 1/4" SS	4
11	B-HN14SS	HEX NUT 1/4" 20NC SS	4
12	RECOVERED ON THE TRUCK	AVAILABLE ON DEMAND	1
13	RECOVERED ON THE TRUCK	AVAILABLE ON DEMAND	1
14	RECOVERED ON THE TRUCK	AVAILABLE ON DEMAND	1

TRUX ACCESSORIES

TITLE: SUNVISOR KENWORTH
CURVED GLASS W900 T800 (1998-2006)

Drawn: SL

Date: 2019-08-06

DWG. NO.
TSUN-K4

Rev.:

Weight:

Size: A

Scale: 1:16

Sheet: 1 OF 3

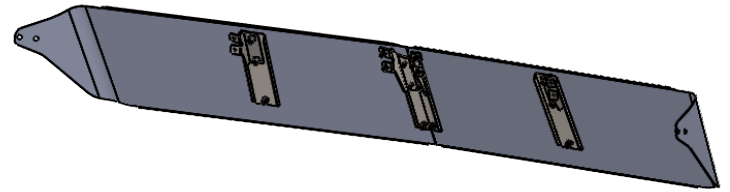
READ ALL INSTRUCTIONS BEFORE BEGINNING INSTALLATION

INSTALLATION INSTRUCTIONS

- 1- REMOVE THE EXISTING SUNVISOR (but keep #6 & 8 recover brackets from OEM visor)
- 2- INSTALL THE BRACKETS ON THE PANELS AS ILLUSTRATED
- 3- TEMPORARILY INSTALL THE SUNVISOR ONTO THE CAB AS ILLUSTRATED
- 4- USE RECOVERED HARDWARE OR HOLES ON BOTH ENDS OF SUNVISOR
- 5- MARK BRACKET MISSING HOLES ON CAB

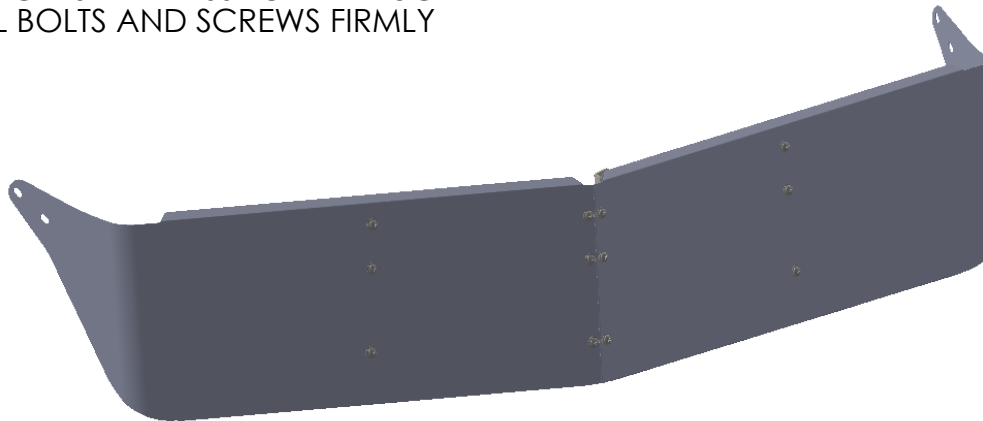
ATTENTION REMOVE SUNVISOR BEFORE DRILLING TO PREVENT DAMAGE

- 6- DRILL MARKED HOLES AT 7/32" (0.21875") DIA.
- 7- IF WITHOUT LIGHTS; SKIP TO STEP #11
- 8- INSTALL THE LIGHTS ON SUNVISOR
- 9- CONNECT THE LIGHTS AND DIRECT WIRE TOWARDS CENTER
- 10- FASTEN THE SUNVISOR AS ILLUSTRATED
- 11- REINSTALL THE SUNVISOR ON THE CAB



CAUTION IT IS THE RESPONSIBILITY OF THE INSTALLER TO PLAN AHEAD THE ADEQUATE ELECTRICAL CONNECTION ACCORDING TO THE STANDARDS OF THE TRUCK MANUFACTURER AND DOT REGISTRATION.

- 12- CONNECT LIGHTS HARNESS TO THE TRUCK
- 13- TIGHTEN ALL BOLTS AND SCREWS FIRMLY



TRUX ACCESSORIES

TITLE: SUNVISOR KENWORTH
CURVED GLASS W900 T800 (1998-2006)

Designed: SL Date: 2019-08-06

DWG. NO.
TSUN-K4

Drawn: SL Date: 2019-08-06

Rev.: Weight:

Approved: RV Date: 2017-03-31

Size: A Scale: 1:16 Sheet: 3 OF 3